



# Installation Guide

Created and Maintained by:  
DeAndrea Laub

---

## ***punq Installation*** 1-1

punq Installation for Mac 1-1

Starting punq (Mac) 1-2

punq installation for Windows 1-5

Starting punq (Windows) 1-6

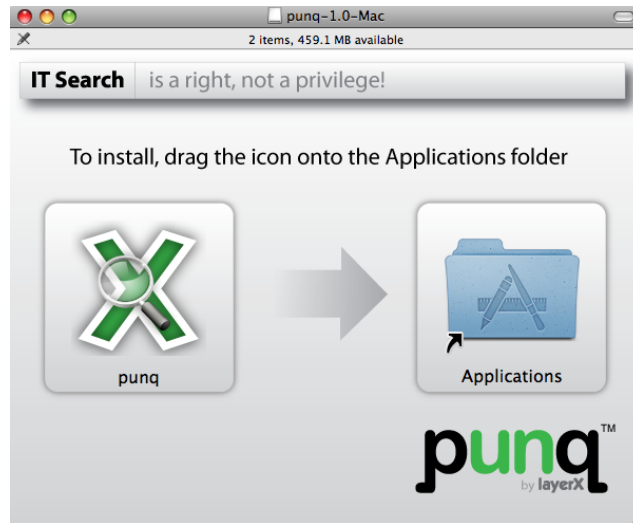


---

### punq Installation for Mac

1. Download punq.
2. If downloading using Firefox, select **open with disk mounter.dmg**.
3. If downloading using Safari, locate your default downloads folder and double click the **punq installer.dmg** to begin the installation.
4. When the pop-up appears drag the **punq icon** into the **application folder**.

FIGURE 1-1. punq Installation for Mac



---

## Starting punq (Mac)

1. Locate your **applications folder**.
2. Select **punq** to open.
3. When punq loads you will be prompted to validate the SSL Certificate. Click **continue** to validate once, or follow the steps below to always trust the certificate.
4. Click **show certificate**.
  - a. Toggle the **Trust button**.
  - b. From the drop-down menu select **Always Trust**.
  - c. Click **Continue**.
5. When prompted type your **system password**.
6. Click **OK**.
7. Follow the prompts to **register your punq application**.

FIGURE 1-2. Mac Certificate



FIGURE 1-3. Mac Certificate

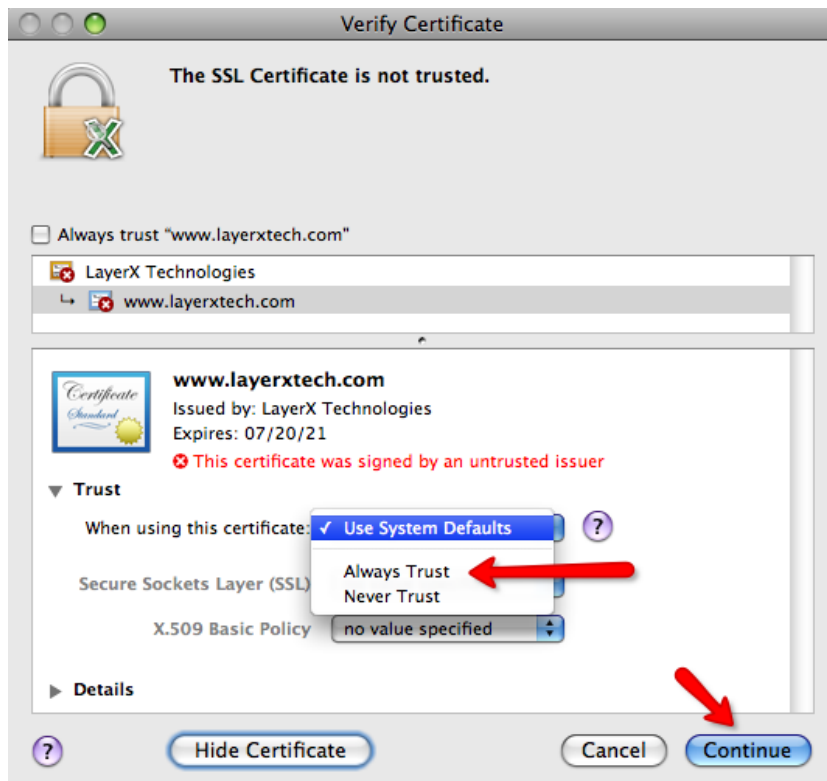
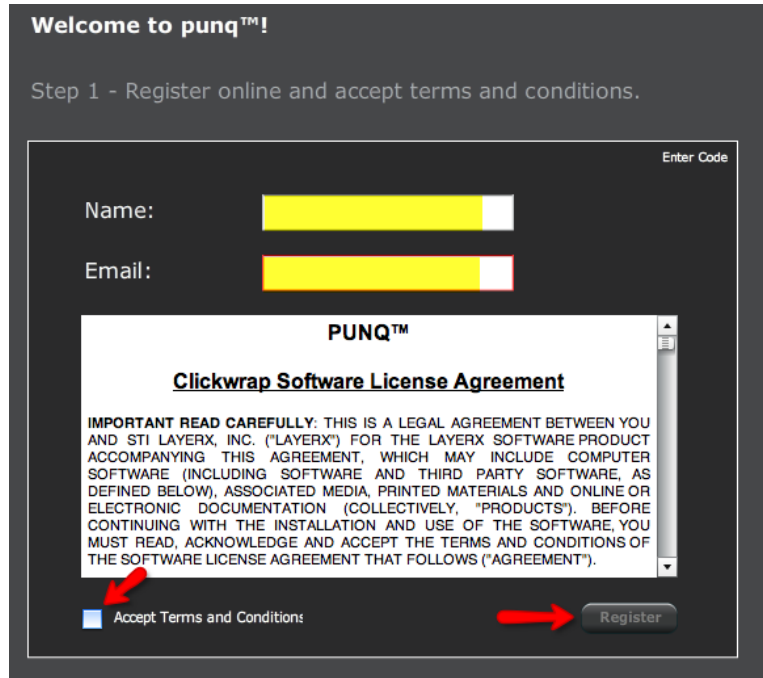


FIGURE 1-4. Registering your punq Application



1. Punq will load and look similar to Figure 1-5

FIGURE 1-5. punq application window



---

## punq installation for Windows

1. Download punq.
2. When the pop-up appears select **run**.
3. Select **run** again for the second pop-up
4. When the punq installer loads, uncheck any components you do not want installed, and click **next**.
5. The next pop-up will allow you to choose a directory for punq. The default directory is your programs directory. To change this browse to a new directory, or to go with the default, simply click **install**.

FIGURE 1-6. punq Installation for Windows

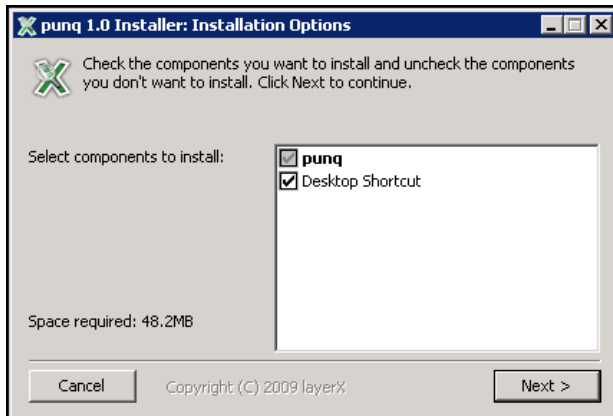
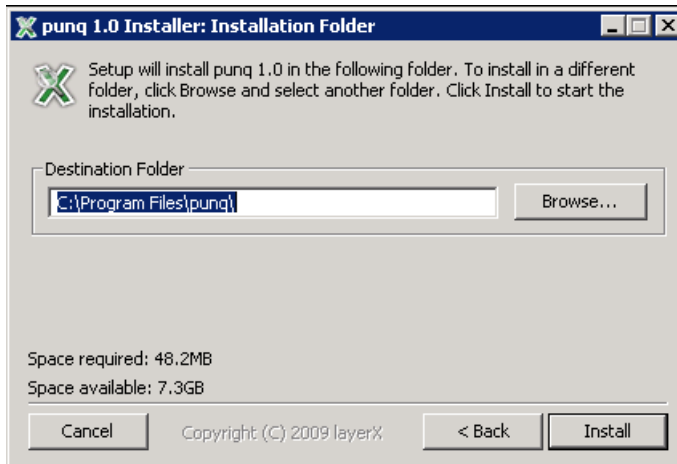


FIGURE 1-7. punq installation for Windows



---

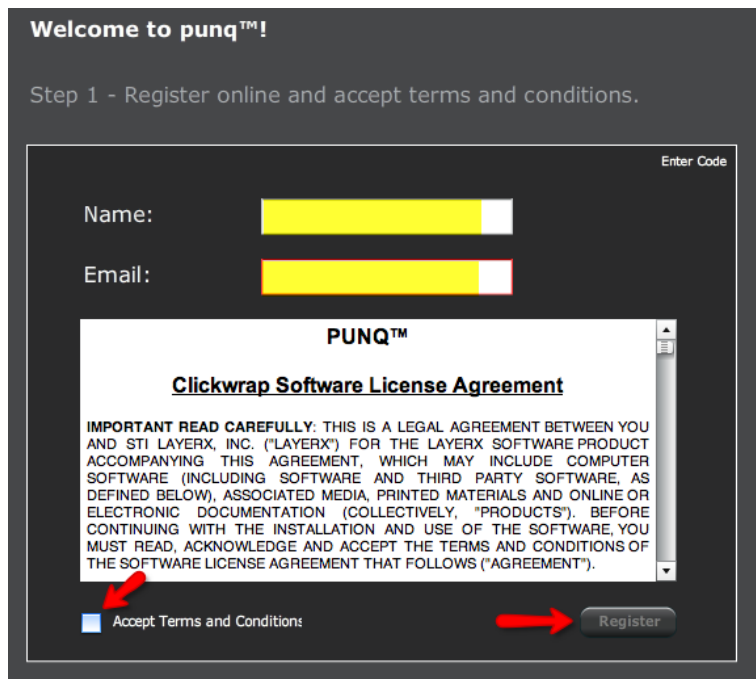
## Starting punq (Windows)

1. Click **Start** from the navigation bar.
2. Hover over **all programs > punq**, and select **punq**.

3. Follow the prompts to **register your punq application.**

**FIGURE 1-8. Registering your punq Application**

---







**layerX technologies**

layerX Technologies  
1075 South Belt line Road  
Suite 200  
Coppell, Texas 75019

Main: 469 528 4650  
Toll Free: 866 277 9850  
email: [info@layerxtech.com](mailto:info@layerxtech.com)  
[www.layerxtech.com](http://www.layerxtech.com)